

# MB Series Motor Brake

## MB-825 Flange Mounted Normal Duty

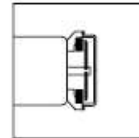
Model number	Function	Mounting
MB-825	Motor Brake	Flange ND

NEMA Frame Sizes	Dim. D
213C & 215C or TC	5.250
254C & 256C or TC	6.250

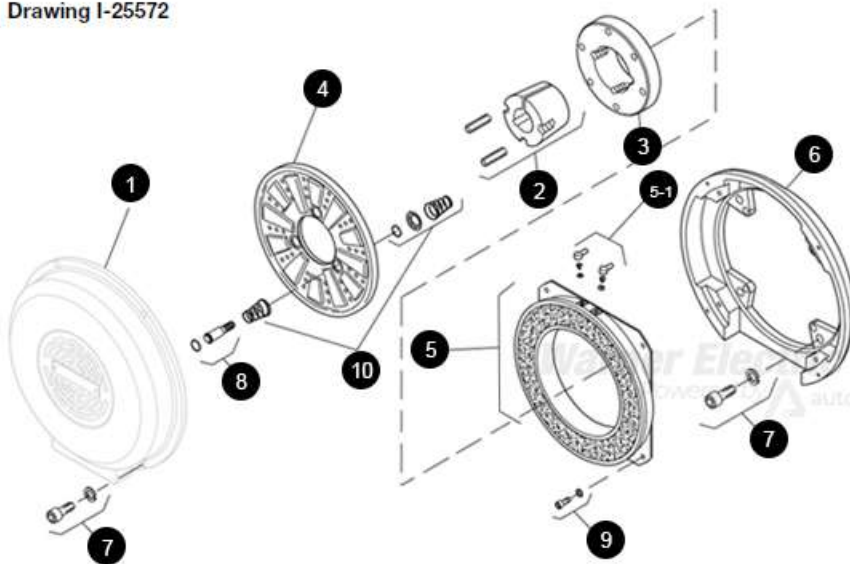


### Application

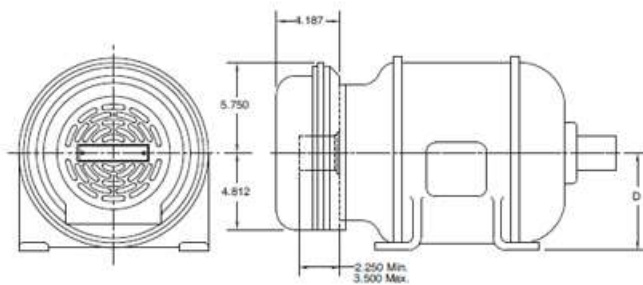
A motor brake mounts directly on the end bell of a double shafted motor.



Drawing I-25572



Item	Description	Part Number	Qty.
1	Cover	5351-288-001	N/A
2	Bushing*		1
	1/2" to 1-5/8" Bore	180-0131 to 180-0149	
3	Armature Hub	540-0394	1
4	Armature	5301-111-018	1
5	Magnet - 90 Volt	5351-631-001	1
5-1	Terminal Accessory	5311-101-001	1
6	Adapter	5351-105-001	1
7	Mounting Accessory	5351-101-003	1
8	Drive Pin and Retainer	5301-101-001	3
9	Mounting Accessory	5321-101-002	1
10	Spring Accessory	5301-101-014	1



### Bushing Part Numbers

Shaft Size	Keyway Size	Bushing Number
		Warner Electric
1/2	1/8 x 1/16	180-0131
9/16	1/8 x 1/16	180-0132
5/8	3/16 x 3/32	180-0133
1 1/16	3/16 x 3/32	180-0134
3/4	3/16 x 3/32	180-0135
13/16	3/16 x 3/32	180-0136
7/8	3/16 x 3/32	180-0137
15/16	1/4 x 1/8	180-0138
1	1/4 x 1/8	180-0139
1 1/16	1/4 x 1/8	180-0140
1 1/8	1/4 x 1/8	180-0141
1 3/16	1/4 x 1/8	180-0142
1 1/4	1/4 x 1/8	180-0143
1 5/16	5/16 x 5/32	180-0144
1 3/8	5/16 x 5/32	180-0145
1 7/16	3/8 x 3/16	180-0146
1 1/2	3/8 x 3/16	180-0147
1 9/16	3/8 x 3/16	180-0148
1 5/8	3/8 x 3/16	180-0149

### Coil Data

Unit Size	PB & MB-825		
Voltage — DC	6	24	90
Resistance @ 20°C — Ohms	1.27	20.4	223.3
Current — Amperes	4.74	1.18	.4
Watts	28	28	36
Coil Build-up — Milliseconds	170	170	170
Coil Decay — Milliseconds	70	75	80

### Weights and Inertia

Unit Size	MB-825	
	Wt. (lbs.)	Inertia (lbs.ft. <sup>2</sup> )
Magnet.....	7.780	.....
Armature & Pins.....	4.783	.323
Armature Hub.....	1.857	.043
Bushing: Max. Bore to.....	.600	.004
Min. Bore.....	1.276	.005
Cover.....	3.687	.....
Adapter.....	3.5	.....