

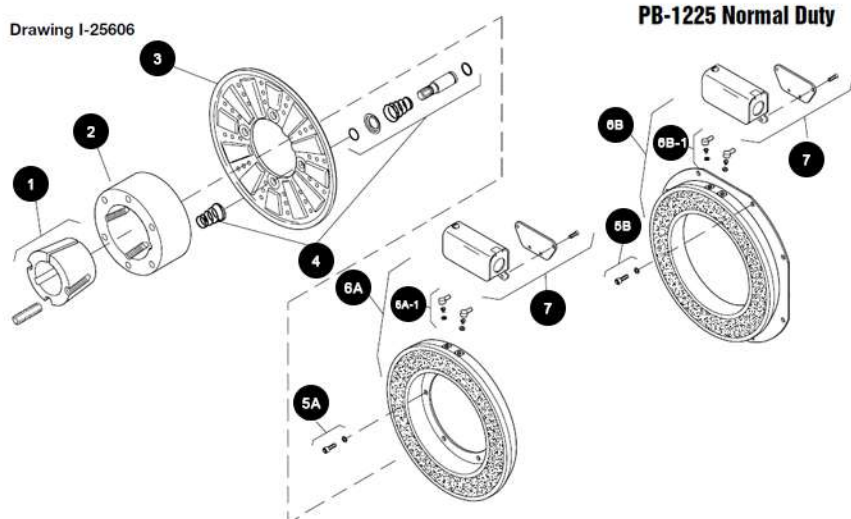
PB Series Brake

PB-1225 Normal Duty

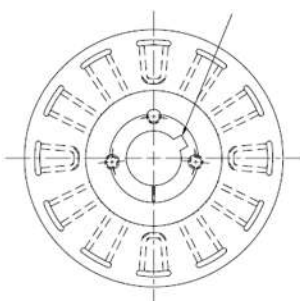


Unit Size	PB-1225, N.D.	
	Wt. (lbs.)	Inertia (lbs.ft. ²)
Magnet.....	18.557
Armature.....	10.227	1.667
Armature Hub.....	6.716	.380
Bushing: Max. Bore to ...	4.055	.085
Min. Bore.....	9.141	.133

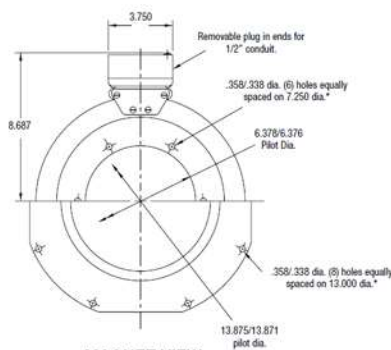
Drawing I-25606



PB-1225 Normal Duty



ARMATURE VIEW



MAGNET VIEW
(Inside & Outside Mounted)

How to Order:

1. Specify Bore Size for Item 2.
2. Specify Inside Mounted for Items 5A and 6A or Outside Mounted for Items 5B and 6B.
3. Specify Voltage for Item 6A or 6B.
4. See Controls Section.

Item	Description	Part Number	Qty.
1	Bushing*		1
	15/16" to 3" Bore	180-0262 to 180-0295	
2	Armature Hub	540-0015	1
3	Armature	5303-111-009	1
4	Autogap Accessory	5201-101-008	4
5A	Mounting Accessory - I.M.	5321-101-001	1
5B	Mounting Accessory - O.M.	5321-101-002	2
6A	Magnet - Inside Mounted		1
	6 Volt	5313-631-005	
	24 Volt	5313-631-006	
	90 Volt	5313-631-007	
	†90 Volt	5313-631-001	
6A-1	Terminal Accessory	5311-101-001	1
6B	Magnet - Outside Mounted		1
	6 Volt	5313-631-010	
	24 Volt	5313-631-012	
	90 Volt	5313-631-011	
	†90 Volt	5313-631-002	
Item	Description	Part Number	Qty.
6B-1	Terminal Accessory	5311-101-001	1
7	Conduit Box	5200-101-011	1

Bushing Part Numbers

Shaft Size	Keyway Size	Bushing N			
		Warner	Electric		
15/16	1/4 x 1/8	180-0262	23/8	5/8 x 5/16	180-0285
1	1/4 x 1/8	180-0263	27/16	5/8 x 5/16	180-0286
1 1/16	1/4 x 1/8	180-0264	2 1/2	5/8 x 5/16	180-0287
1 1/8	1/4 x 1/8	180-0265	2 9/16	5/8 x 5/16	180-0288
1 3/16	1/4 x 1/8	180-0266	2 5/8	5/8 x 5/16	180-0289
1 1/4	1/4 x 1/8	180-0267	2 11/16	5/8 x 5/16	180-0290
1 5/16	5/16 x 5/32	180-0268	2 3/4	5/8 x 5/16	180-0291
1 3/8	5/16 x 5/32	180-0269	2 13/16	3/4 x 3/8	180-0292
1 7/16	3/8 x 3/16	180-0270	2 7/8	3/4 x 3/8	180-0293
1 1/2	3/8 x 3/16	180-0271	2 15/16	3/4 x 3/8	180-0294
1 9/16	3/8 x 3/16	180-0272	3	3/4 x 3/8	180-0295
1 5/8	3/8 x 3/16	180-0273			
1 11/16	3/8 x 3/16	180-0274			
1 3/4	3/8 x 3/16	180-0275			
1 13/16	1/2 x 1/4	180-0276			
1 7/8	1/2 x 1/4	180-0277			
1 15/16	1/2 x 1/4	180-0278			
2	1/2 x 1/4	180-0279			
2 1/16	1/2 x 1/4	180-0280			
2 1/8	1/2 x 1/4	180-0281			
2 3/16	1/2 x 1/4	180-0282			
2 1/4	1/2 x 1/4	180-0283			
2 5/16	5/8 x 5/16	180-0284			